

PERIMETER STONE MUST ALWAYS BE BROUGHT UP EVENLY WITH BACKFILL OF BED. PERIMETER STONE MUST EXTEND HORIZONTALLY TO THE EXCAVATION WALL FOR BOTH STRAIGHT OR SLOPED SIDEWALLS.

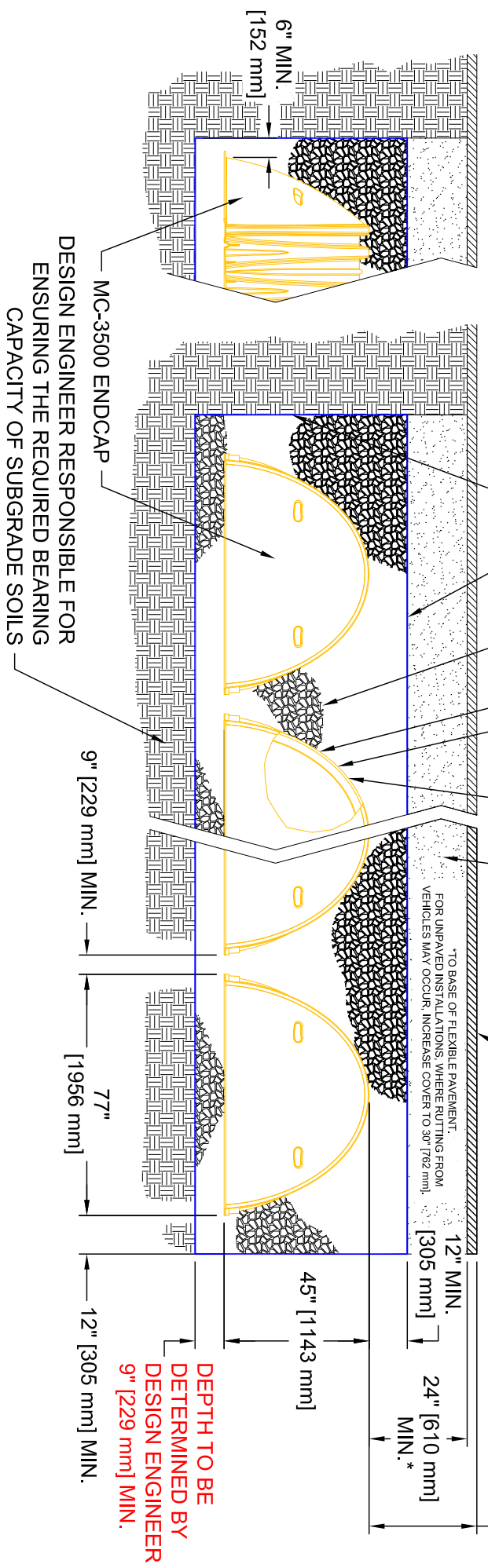
CHAMBERS SHALL MEET ASTM F 2418 "STANDARD SPECIFICATION FOR POLYPROPYLENE (PP) CORRUGATED WALL STORMWATER COLLECTION CHAMBERS"

CHAMBERS SHALL BE DESIGNED IN ACCORDANCE WITH ASTM F2787 "STANDARD PRACTICE FOR STRUCTURAL DESIGN OF THERMOPLASTIC CORRUGATED WALL STORMWATER COLLECTION CHAMBERS"

MC-3500 CHAMBER
 NOMINAL 3/4 - 2 INCH [19 mm - 51 mm] CLEAN, CRUSHED, ANGULAR STONE (AASHTO M43 #3 & #4 SIZES ALLOWED)
 ADS 601 NON-WOVEN GEOTEXTILE (OR EQUAL) ALL AROUND ANGULAR STONE

GRANULAR WELL GRADED SOIL/AGGREGATE MIXTURES, <35% FINES. COMPACT IN 6" [152 mm] LIFTS TO 95% STANDARD PROCTOR DENSITY. SEE THE TABLE OF ACCEPTABLE FILL MATERIALS

PAVEMENT DESIGN (PER ENGINEER'S DRAWINGS) 6.5' [1.98 m] MAX.






THE INSTALLED CHAMBER SYSTEM SHALL PROVIDE THE LOAD FACTORS SPECIFIED IN THE AASHTO LRFD BRIDGE DESIGN SPECIFICATIONS SECTION 12.12 FOR EARTH AND LIVE LOADS, WITH CONSIDERATION FOR IMPACT AND MULTIPLE VEHICLE PRESENCES.

DESIGN ENGINEER RESPONSIBLE FOR ENSURING THE REQUIRED BEARING CAPACITY OF SUBGRADE SOILS

DEPTH TO BE DETERMINED BY DESIGN ENGINEER 9" [229 mm] MIN.

MC-3500 TYPICAL CROSS-SECTION

 <p>ADVANCED DRAINAGE SYSTEMS, INC.</p>	<p>THE DESIGN ENGINEER SHALL REVIEW THIS DRAWING PRIOR TO CONSTRUCTION. IT IS THE ULTIMATE RESPONSIBILITY OF THE DESIGN ENGINEER TO ENSURE THAT THE PRODUCT(S) DEPICTED AND ALL ASSOCIATED DETAILS MEET ALL APPLICABLE LAWS, REGULATIONS, AND PROJECT REQUIREMENTS.</p>		 <p>StormTech Division of Rainwater Runoff Management 70 INNWOOD ROAD, SUITE 3 ROCKY HILL, CT 06067 PHONE: 888-992-2894 FAX: 866-329-9401 WWW.STORMTECH.COM</p>	SCALE: NTS
				DATE: 08-22-12
				DRAWN BY: JLM
				CHECKED: